



ZigBee®
Certified Product

Catalog ZigBee® Product 2015



ZigBee®
Member

Overview of products

By application areas



Comfort

- Temperature/Humidity sensor : ZHum
- Light sensor : ZLum



Energy

- Controllable plug : ZPlug Boost
- Water/Electricity meter : ZMeter



Opening

- Door lock sensor : ZLock
- Shutter actuator : ZShade
- Door/Shutter control switch : ZSC



Lighting

- Remote control/Temperature : ZRC
- Light control : ZLight



Security

- Motion detector : ZMove
- Opening detector : ZDoor
- Smoke and CO detector : ZGas
- Water leak detector : ZLeak



People

- Keyring remote control : ZKey
- Fall, pulse, alarm detector : ZCare



Software tools

- SDK : DevBee : API LibZCL multi platform
- SDK : Embedded : API LibZCL (CC25xx)
- Network manager : CleoBee™
- Android application : AndroBee
- WiBee for Raspberry : WiBee-PI



Hardware tools

- Development:
 - ZigBee® Module: ZBee
 - Evaluation board : ZBD
- USB dongle : UBee Boost / UBee Nano
- Platform Wifi ZigBee® : WiBee
- Evaluation pack : BeePack™

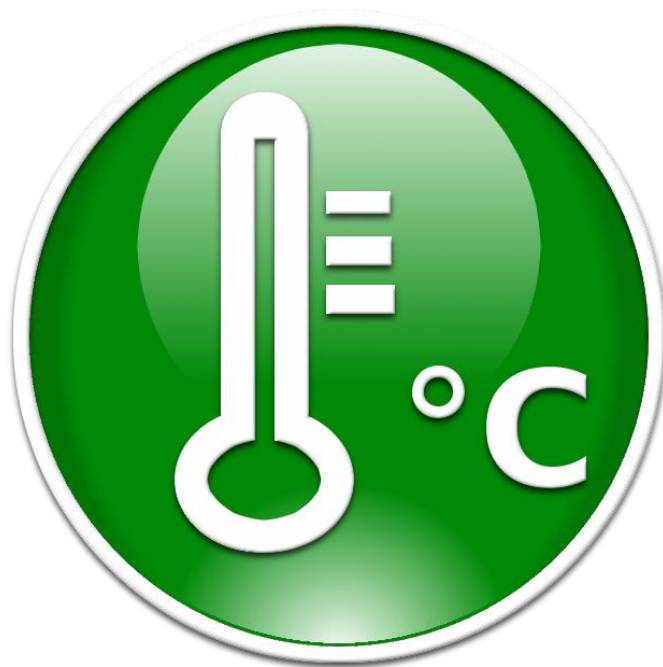


Various

- ZigBee® router: ZXpand

Application Domain:

Comfort



ZHUM 1.0

La domotique facile et
sans fil par CLEODE



C

Détecteur de d'humidité relative et de température ZigBee®

Descriptif fonctionnel

Le produit ZHUm est un capteur de température et d'humidité relative.

L'appareil fonctionne sans fil et communique les informations de détection via la norme radio fréquence Zigbee®. Le produit ZHUm consomme très peu d'énergie et fonctionne sur pile bouton CR2032.

Il s'intègre aisément dans un réseau existant grâce aux fonctionnalités inhérentes à la norme ZigBee®. Il est compatible avec la stack ZigBee pro 2007, profil Home Automation Public.

Le produit est conçu pour une fixation murale par vis ou par adhésif double face.

Plusieurs produits ZHUm peuvent être installés dans votre habitation.

Caractéristiques

Fonctions

- Mesure de température
- Mesure d'humidité relative
- Mode d'appairage
- Voyant de visualisation d'état
- Surveillance de la batterie
- Compatibilité stack pro 2007 profil "Home Automation Public"

Conformités



Répond aux normes et directives établies par les conventions européennes



Répond à la norme "Home Automation" établie par l'alliance ZigBee®

Données techniques

Poids	30 g (hors batterie)
Dimensions	51,5/27,5/15 mm
Alimentation	Pile 3V CR2032
Autonomie	> à 1 an
Plages de mesure	Humidité relative : 0 à 100% Température : -40 à 125°C
Précisions	± 3% (max), 0-80 % HR ± 0,4°C (max), -10 à 85°C



ZLUM 1.0

Easy and wireless Home
Automation by CLEODE



ZigBee® Light Sensor

Functional description

Zlum product is a light sensor for detecting the light level in a room.

The unit operates wirelss and communicates information via the standard detection Zigbee® radio frequency. Zlum uses very little energy and works with a CR2032 battery.

It's easily integrated into an existing network, due to functionalities inherent to the ZigBee®. It is compatible with the ZigBee stack pro 2007.

The product is designed for wall fixing with screws or double sided adhesive.

Many Zlum products can be installed in your home.

Specifications

Key Features

- Measuring the brightness
- Pairing mode
- Status LED
- Embedded battery supervisor
- Compatibility stack pro 2007 profil "Home Automation Public"

Conformity



Meets European consumer safety, health and environmental requirements.



Meets the Home Automation Public Profile standard established by Zigbee alliance.

Technical Data

Weight	30 g (without battery)
Power	CR2032 3V battery
Autonomy	Up to 1 year
Mesuring range	1-65536 Lux

Application Domain:

Energy





ZPLUG BOOST 5.14

Easy and wireless Home
Automation by CLEODE



ZigBee® Power Outlet

Functional description

ZPlug Boost is a wireless Power Outlet which can be switched On/Off by Zigbee™ protocol.

ZPlug Boost can commute 16A devices on 220V/230V.

ZPlug Boost measures the instantaneous power and cumulated consumption of the connected device.

User can configure the reporting of consumption with a Zigbee™ manager (cf. [CleoBee™](#))

ZPlug Boost is a Zigbee™ router with amplified signal. Then, with it, you can expand the network to cover your entire house.

Specifications

Key features

- Can commute 220V device up to 16A
- Instantaneous and cumulated consumption measuring
- Zigbee™ router with amplified signal
- Pairing mode
- Manual switching possible
- Compliant with the Stack Pro 2007 "Home Automation

Conformités



Meets European consumer safety, health and environmental requirements.

Technical Data

Weight	160 g
Power	220V 50Hz French Standards
Commutation	Up to 16A on 220V
Output power (max)	Up to 20 dBm
Accuracy measurement	+/-1% of full scale
Wireless scope	+3,3 dBm standard + 10 dBm Boost option



ZMETER 2.0

Easy and wireless Home
Automation by CLEODE



ZigBee® Consumption Meter

Functional description

Without modify your installation (electric or water), ZMeter measures the instantaneous power and cumulated consumption of the connected device.

ZMeter is compliant with Zigbee Pro 2007 stack and can be easily add in an existing network.

ZMeter is very low power and works with two AAA batteries.

This product can be fixed on the wall with screws or sticky tape.

User can configure the reporting of consumption with a Zigbee™ manager (cf. [CleoBee™](#)).

Specifications

Key Features

- Instantaneous and cumulated consumption measuring
- Pairing mode
- State LED
- Embedded battery supervisor
- Compliant with the Stack Pro 2007 "Home Automation" Public Profile

Conformity



Meets European consumer safety, health and environmental requirements.



Meets the Home Automation Public Profile standard established by Zigbee alliance.

Technical Data

Weight	60 g (without battery)
Power	2 AAA batteries
Battery life	Up to 1 year
Measurement	73/42/34 mm
Options	Connectors for connec water meter

Application Domain: **Opening**





ZLOCK 1.0

Easy and wireless Home
Automation by CLEODE



ZigBee® Door Lock

Functional description

The product ZLock is a Zigbee™ module to command a door lock 12V or 24V.

The output supplied with 12V or 24V according to the power supply used can unlock the lock of a door.

User can configure it with a Zigbee™ manager (Cf. [CleoBee™](#)) and can manage it with a remote control (Cf. [ZSC](#)).

ZLock is also a Zigbee™ router. Then, with it, you can expand the network to cover your entire house.

Specifications

Key Features

- Can commute up to 3A
- Pairing mode
- ZigBee® router
- Compliant with the Stack Pro 2007 "Home Automation" Public Profile

Conformity



Meets European consumer safety, health and environmental requirements.



Meets the Home Automation Public Profile standard established by Zigbee alliance.

Technical Data

Weight	60g
Power	Up to 24V
Measurement	54x52x32 mm



ZSHADE 1.0

Easy and wireless Home
Automation by CLEODE



ZigBee® Command of Engine of Roller Shutter

Functional description

The product ZShade is a Zigbee™ module to manage engine of roller shutter or blind. It is designed to be integrated as close to the engine.

It is meant to control a motor for open, close or stop any type of the roller shutter or blind. It can commute all non-radio motors (with up and down outlet lines) 3A/230V 50-60Hz with a button stop.

User can configure it with a Zigbee™ manager (Cf. [CleoBee™](#)) and can manage it with a remote control (Cf. [ZSC](#)).

ZShade is also a Zigbee™ router. Then, with it, you can expand the network to cover your entire house.

Specifications

Key Features

- Can commute 230V up to 3A
- Up, down and stop the roller shutter
- ZigBee® router
- Shade LED
- Pairing mode
- Compliant with the Stack Pro 2007 "Home Automation" Public Profile

Conformity



Meets European consumer safety, health and environmental requirements.



Meets the Home Automation Public Profile standard established by Zigbee alliance.

Technical Data

Weight	60g
Power	85-263 V 50-60 Hz
Commutation	Up to 3A / 230V
Measurement	44/44/25 mm



ZSC 2.0

Easy and wireless Home
Automation by CLEODE



ZigBee® Control Switches

Functional description

The remote control ZigBee™ ZSC allows a user to pilot different systems of opening such as a roller shutter, an electric door or a portal.

It also integrates a sensor of digital temperature allowing measuring the ambient temperature and sending on the network..

ZSC is compliant with Zigbee Pro 2007 stack and then it can be easily plug in an existing network..

ZSC is fully configurable with a Zigbee™ manager (cf. [CleoBee™](#)). Several ZSC can be installed at home to monitor your house temperature.

ZSC is very low power and works with one battery CR2032

The box is designed for wall mounting, with screws or double sided adhesive.

Specifications

Key Features

- 5 switches
- Temperature sensor
- Pairing mode
- State LED
- Embedded battery supervisor
- Compliant with the Stack Pro 2007 "Home Automation" Public Profile

Conformity



Meets European consumer safety, health and environmental requirements.



Meets the Home Automation Public Profile standard established by Zigbee alliance.

Technical Data

Weight	38 g (without battery)
Power	CR2032 3V battery
Battery life	Up to 1 year
Measurement	70/64/15 mm
Nb Switches	5
Accuracy Measurement	0,5°C
Measurement range	-20°C/60°C
temperature	

Application domain:

Lighting





ZRC 2.0

Easy and wireless Home
Automation by CLEODE



ZigBee® Remote Control

Functional description

ZRC is a wall switches which communicates on Zigbee™ standard.

ZRC embeds 5 Switches and a temperature sensor which can be used in conjunction with others Zigbee™ devices like thermostat, ...

ZRC is compliant with Zigbee Pro 2007 stack and then it can be easily plug in an existing network.

ZRC is fully configurable with a Zigbee™ manager (cf. [CleoBee™](#))

Several ZRC can be installed at home to monitor your house temperature.

ZRC is very low power and works with one CR2032 battery. This product can be fixed on the wall with screws or sticky tape.

Specifications

Key Features

- 5 switches
- Temperature sensor
- Pairing mode
- State LED
- Embedded battery supervisor
- Compliant with the Stack Pro 2007 "Home Automation" Public Profile

Conformity



Meets European consumer safety, health and environmental requirements.



Meets the Home Automation Public Profile standard established by Zigbee alliance.

Technical Data

Weight	38 g (without battery)
--------	------------------------

Power	CR2032 3V battery
-------	-------------------

Battery life	Up to 1 year
--------------	--------------

Measurement	70/64/15 mm
-------------	-------------

Nb Switches	5
-------------	---

Accuracy Measurement	0,5°C
----------------------	-------

Measurement range temperature	-20°C/60°C
----------------------------------	------------



ZLIGHT 2.0

Easy and wireless Home
Automation by CLEODE



ZigBee® Power Light Functional description

The product ZLight is a Zigbee™ module to command two lights of a minimal power of 500 W each

It is designed to be integrated into a wall or a ceiling lamp.

It allows ON/OFF and Toggle orders.

It switches any bright spots working on 3A/230V 50-60Hz.

User can configure it with a Zigbee™ manager (Cf. [CleoBee™](#)) and can manage it with a remote control (Cf. [ZRC](#)).

ZLight is also a Zigbee™ router. Then, with it, you can expand the network to cover your entire house.

Conformity



Meets European consumer safety, health and environmental requirements.



Meets the Home Automation Public Profile standard established by Zigbee alliance.

Technical Data

Weight	60g
Power	85-263 V 50-60 Hz
Commutation	2 lightings up to 3A on 230V
Measurement	44/44/25 mm

Specifications

Key Features

- Can switches 2 lightings
- ON/OFF/Toggle
- ZigBee® router
- State LED
- Pairing mode
- Compliant with the Stack Pro 2007 "Home Automation" Public Profile.

Application domain:
Security





ZMOVE 2.0

Easy and wireless Home
Automation by CLEODE



ZigBee® Motion Detector

Functional description

ZMove is a wireless PIR motion detector which communicates on Zigbee™ standard.

ZMove is compliant with Zigbee Pro 2007 stack and can be easily plug in an existing network.

ZMove is fully configurable with a Zigbee™ manager (cf. [CleoBee™](#))

Several ZMove can be installed at home to protect your house.

ZMove is very low power and works with two AAA batteries.

This product can be fixed on the wall with screws or sticky tape.

Specifications

Key Features

- PIR detector
- Pairing mode
- State LED
- Embedded battery supervisor
- Compliant with the Stack Pro 2007 "Home Automation" Public Profile

Conformity



Meets European consumer safety, health and environmental requirements.



Meets the Home Automation Public Profile standard established by Zigbee alliance.

Technical Data

Weight	70 g (without batteries)
Power	2 AAA batteries
Battery life	Up to 1 year
Measurement	90/42/27 mm



ZDOOR 2.0

Easy and wireless Home
Automation by CLEODE



ZigBee® Door/Window Sensor

Functional description

The ZDoor product detects intrusion with a magnet and reed-switch mechanism that reports an alarm during unauthorized entry by door or window.

ZDoor is a wireless product. It sends its alarms on Zigbee™ network.

ZDoor is very low power and works with one coin cell battery CR2032.

ZDoor is compliant with Zigbee Pro 2007 stack and can be easily add in an existing network.

Several ZDoor can be installed at home to monitor any door or window within your house.

This product would be fixed on the wall with screws or sticky tape.

Conformity



Meets European consumer safety, health and environmental requirements.



Meets the Home Automation Public Profile standard established by Zigbee alliance.

Technical Data

Weight	60 g (without battery)
Power	CR2032 3V battery
Battery life	> à 1 an
Measurement	65/54/21 mm

Specifications

Key Features

- Permanently detects intrusion
- Pairing mode
- State LEDt
- Embedded battery supervisor
- Compliant with the Stack Pro 2007 "Home Automation" Public Profile



3 700571 800074

ZGAS 1.0

Easy and wireless Home
Automation by CLEODE



ZigBee® Smoke and Carbon Monoxide Detector

Functional description

ZGas detects any presence of smoke or Carbon Monoxide.

ZGas is a wireless product. It sends its alarms on ZigBee™ network.

ZGas is very low power and works with one 9V battery.

ZGas is compliant with ZigBee Pro 2007 stack and can be easily plug in an existing network.

Several ZGas can be installed at home to protect your house. We recommend installing one product at each stair.

- Embedded battery supervisor
- Compliant with the Stack Pro 2007 "Home Automation" Public Profile

Conformity



Meets European consumer safety, health and environmental requirements.



Meets the Home Automation Public Profile standard established by Zigbee alliance.

Technical Data

Weight	130 g (without battery)
Power	6LR61 alkaline 9V Battery
Consumption	<100 µA in idle mode <75 mA in alarm mode
Sensibility	
CO :	100 ±50ppm
Smoke :	1%~50%/ft OBS

Specifications

Key Features

- Permanently detects monoxyde
- Permanently detects smoke
- Pairing mode
- Test mode
- State LED



ZLEAK 1.0

Easy and wireless Home
Automation by CLEODE



ZigBee® Water Leak Detector

Functional description

The ZLeak product detects a water leak with a probe.

ZLeak is a wireless product. It sends its alarms on Zigbee™ network.

ZLeak is very low power and works with one coin cell battery CR2032.

ZLeak is compliant with Zigbee Pro 2007 stack and can be easily add in an existing network.

This product would be fixed on the wall with screws or sticky tape.

Several ZLeak can be installed at home to monitor wet parts in your home.

Specifications

Key Features

- Permanently detects water leak
- Pairing mode
- State LED
- Embedded battery supervisor
- Compliant with the Stack Pro 2007 "Home Automation" Public Profile

Conformity



Meets European consumer safety, health and environmental requirements.



Meets the Home Automation Public Profile standard established by Zigbee alliance.

Technical Data

Weight	30 g (without battery)
Power	CR2032 3V battery
Consumption	< 2µA in idle mode
Battery life	Up to 1 year

Application domain :
Personal assistance





ZKEY 1.0

Easy and wireless Home
Automation by CLEODE



ZigBee® Keychain Functional description

The product ZKey allows you to control ZigBee® devices home by wireless link utilizing the standard ZigBee® wireless frequency.

Each button allows the management of a scene and enables according to the scenarios planned to control an opening gate, the closure of all or a part of the shutters.

The product is specially optimized for a use outside the network and works with CR2032 battery.

User can configure it with a Zigbee™ manager (Cf. [CleoBee™](#)).

Specifications

Key Features

- 1 to 5 buttons
- Lock mode
- Configuration mode
- Pairing mode
- Embedded battery supervisor
- Compliant with the Stack Pro 2007 "Home Automation" Public Profile



Conformity



Meets European consumer safety, health and environmental requirements.



Meets the Home Automation Public Profile standard established by Zigbee alliance.

Technical Data

Weight	23 g (Battery include)
Power	CR2032 3V battery
Consumption	Up to 2µA in idle mode
Battery life	Up to 1 year
Measurement	60/40/17 mm
Option	1 ou 5 buttons



ZCARE 1.0

Easy and wireless Home
Automation by CLEODE



ZigBee® Fall and Pulse Detector

Functional description

ZCare is a fall and pulse detector which can communicate on Zigbee™ standard.

ZCare is used to detect, with its embedded numeric accelerometer and photo reflective sensor, a fall and pulse of a person.

On fall or abnormal pulse, it transmits an alarm to a coordinator ZigBee™ (cf [UBee](#)). Also, the user can easily alert by pressing a button on ZCare.

ZCare is compliant with Zigbee™ Pro 2007 stack and then it can be easily plug in an existing network. ZCare is fully configurable with a Zigbee™ manager (cf. [CleoBee™](#))

Several ZCare can be installed to take care of a group. ZCare is very low power and works with one CR2477 battery.

This product can be easily fixed on the wrist.

Specifications

Key Features

- Fall detector
- Pulse detector
- Manual alarm

- Pairing mode
- State LED
- Embedded battery supervisor
- Compliant with the Stack Pro 2007 "Home Automation" Public Profile

Conformity



Meets European consumer safety, health and environmental requirements.



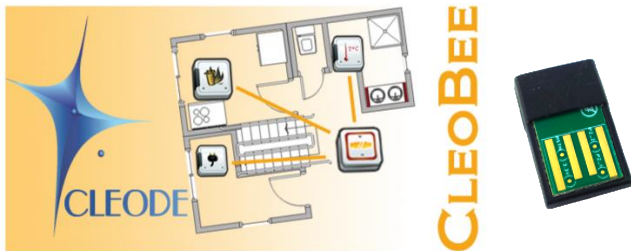
Meets the Home Automation Public Profile standard established by Zigbee alliance.

Technical Data

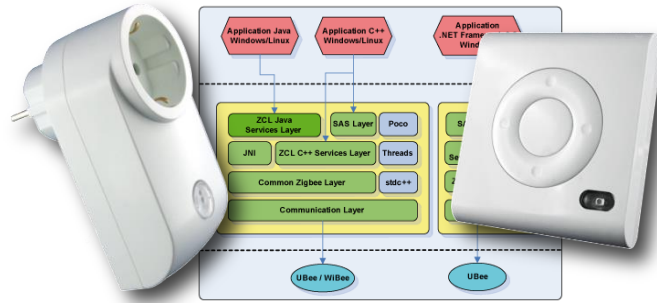
Weight	70g (without battery)
Power	CR2477 3V battery
Battery life	Up to 6 months
Sensibility	0,0625g
Measurement range	-2g à + 2g

Software tools





CLEOBEE



SDK SOFTWARE

Easy and wireless Home Automation by CLEODE



SDK ZigBee® DevBee™

Descriptif fonctionnel

DevBee™ is a development kit targeting users and developers of ZigBee™ wanting to fast generate a wireless mesh home networking based on ZigBee™ protocol and the IEEE 802.15.4 standard without specific knowledge of the ZigBee stack.

This DevBee™ contains a ZCL library that provides a higher level API.

This ZCL library provides, in C/C++, JAVA or C#, the following functionalities:

- ⤴ Automatic Network discovering of all the devices,
- ⤴ High ZCL level functions to read and write attributes, manage reporting, bindings and groups,
- ⤴ Provides all the ZigBee definitions (smart energy, home automation, cluster library, ...)
- ⤴ Software actions to control ZigBee devices, to send e-mail and SMS

This library makes ZigBee use very easy. You focus on your application, not on the serial protocol between our UBee and a PC or Box.

Specifications

SDK description

- A ZigBee® coordinator : UBee Nano
- A ZigBee® plug : ZPlug Boost
- A ZigBee® remote control : ZRC
- A CDROM with :
 - A binary library, LibZCL :
 - C/C++ or
 - Java, or
 - C#
 - A ZigBee® network management : CleoBee™
- Compliant with the Stack Pro 2007 "Home Automation" Public Profile.

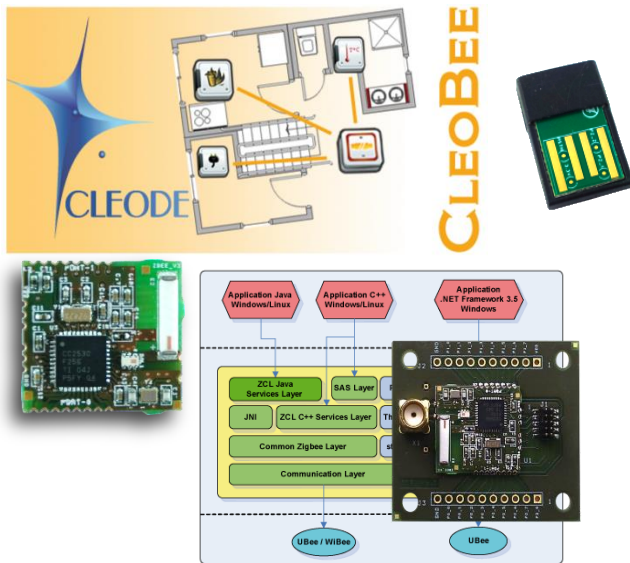
Conformity



Meets European consumer safety, health and environmental requirements.



Meets the Home Automation Public Profile standard established by Zigbee alliance.



EMBEDDED SDK

Easy and wireless Home Automation by CLEODE



ZigBee® Embedded SDK

Functional description

The ZigBee® Development Kit, dedicated CC25xx of Texas Instruments is intended for developers of ZigBee®.

It aims to implement and quick start of an embedded application without knowledge of ZigBee® standard.

This development kit consists of a library ZEL who implements the standard mechanisms of a ZigBee® product.

This API, provides the following features:

- Network association Switch
- Automatic management of reads and writes attributes
- Management reports, bindings, groups and scenes,
- Adding standards clusters
- Entry point for adding owner cluster
- A typical application project skeleton, directly usable by IAR Embedded Workbench for 8051

The application can be tested directly on the evaluation card. Zbee OEM module allows to test the solution at a lower cost.

Specifications

SDK description

- A ZigBee® coordinator : UBees Nano
- A ZigBee® evaluation board : ZDB with ZBee a OEM ZigBee® modul
- A CD Rom with:
 - A binary library : LibZEL :
 - A ZigBee® network management : CleoBee™
- Compliant with the Stack Pro 2007 "Home Automation" Public Profile

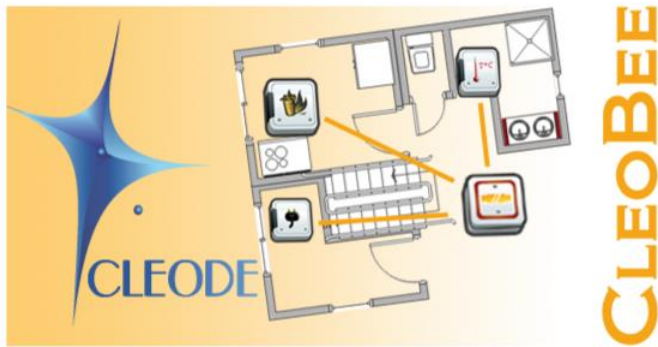
Conformity



Meets European consumer safety, health and environmental requirements.



Meets the Home Automation Public Profile standard established by ZigBee alliance.



CLEOBEE™ 4.0

Easy and wireless Home
Automation by CLEODE



ZigBee® Network Management

Functional description

CleoBee™ is henceforth available and allows to visualize a network of ZigBee™ objects, to interact with these last ones without having of knowledge in programming.

Management opening :

Opening or closing blinds or shutters, gate, door, by area or centralized. Management scenarios and time periods.



Temperature management:

Management and programming of heating or cooling in different parts of the house.



Lighting management :

Management of lighting scenarios depending on the activity and the external environment.

Remote management :

Integrated solution allowing the management via internet of the home.

Emission of alarms on all media (SMS, Email, Voice \



Energy management :

Statement of energy consumption (Water, electricity).



Safety :

Integrated solution to make life easier for disabled people (elderly, disabled,..)



Safety of property :

Protection of all the home against intruders and the risk of fire.

Fonctionnalités

Network visualization

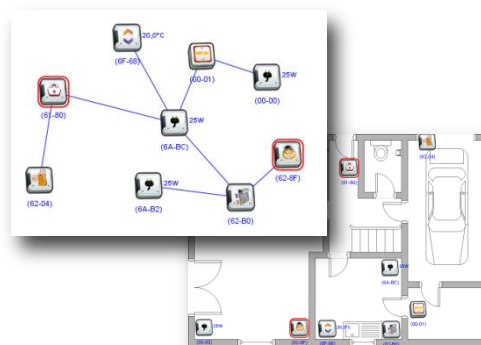
Natively, at the comissioning, the manager CleoBee™ will perform a discovery of the ZigBee® network.

After the network discovered, you can work in topology mode (presentation of the network as a tree relationship father/ son) or in geographic mode (positioning of objects discovered on a 2D plane.)

Configuration



Whatever the operation mode, you can always configure inter-objects links (bindings) or software actions, as well as the objects themselves.



Scénarios

Similarly, you can, depending on the embedded objects, create and manipulate groups and scenes, allowing, for exemple, to define scenarios as the sleep of your home (before vacation). On software order or pressing a button, your home will, depending on the configuration you performed:

- Cut all the lights
- Down all the shutters
- Put all the heaters in «Eco» mode
- Activate monitoring of the house (intruder alarm)

Notification



Similarly, the system can inform you in real time of the status of services by notifying via various media (Email, SMS*, Vocal**) all changes. These notifications are often used to warn of intrusion, a functional anomaly such as water leak, a risk of fire. In the case of assistance to disabled persons, they can warn caregiver that a person has fallen or in trouble.

*May require subscription following operators

** Requires a subscription (contact us)



Accessibility

Your installation home ZigBee® automation always remains accessible even from outside. With the internet option, you can, with your laptop or phone, control the products installed in your home.



Specifications

Key Features

- Network visualization (topologique or 2D)
- Projects management
- Authorization management network Objects configuration
- Network configuration (channel, PanId, keys, ...)
- Bindings, groupes, and scenes configuration,
- Software actions configuration (http, email, SMS,...),
- Alarms management,
- Backup of all network evenements

Conformity



Meets European consumer safety, health and environmental requirements.



Meets the Home Automation Public Profile standard established by Zigbee alliance.

Technical Data

Support

CD

Compatibility

Windows XP, Seven 32/64
Linux, MacOS 10.5.8
Other on demand



ANDROBEE 1.0

Easy and wireless Home
Automation by CLEODE



ZigBee® Android Management Functional description

The AndroBee product is an application dedicated to the management of a home automation ZigBee® network, via local or remote access for touchscreen Tablet Android OS version 3.2 minimum.

Connected to the WiBee server, the application lets you view all of the elements integrated into your ZigBee® network.

Via a simple and intuitive interface you can control all of your installation.

Specifications

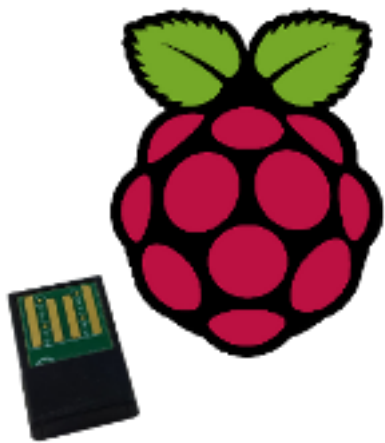
Key Features

- Visualization of your ZigBee® network by application domain (comfort, energy, security, medical,...)
- Graphical Widgets for intuitive use
- Display of the various measures in the form of graphs or histograms
- Scene activation
- Local or remote communication

Technical Data

OS supported	Android 3.2 et plus
Screen	8" and more. Upcoming Smartphone version
Support	Delivered as Android package
Prerequisite	Have a WiBee version 3.1 minimum





WIBEE-PI 1.0

Easy and wireless Home
Automation by CLEODE



WiBee for Raspberry Functional description

WiBee-PI is the package for Raspberry WiBee that with a UBee nano key becomes a Controller ZigBee autonomous able to manage, to control and to monitor a set of objects independently ZigBee through an embedded Web site and / or a CleoBee™ remote application.

WiBee-PI utilizes the Raspbian distribution and requires postgresql database and apache2 http server.

To install the package WiBee-PI, you will :

- Update the list of packages,
- Install package,
- Update dependencies.

After installation, you can now connect on the website through the following link:

[http://\[IP address of the Raspberry\]/wibee](http://[IP address of the Raspberry]/wibee)

or

with the CleoBee™ remote application.

WiBee-PI requires a **SD Card of 8GB** for an optimal use.

A **preinstalled SD Card of 8GB** with postgresql packages and apache2 is also available.

Specifications

Key Features

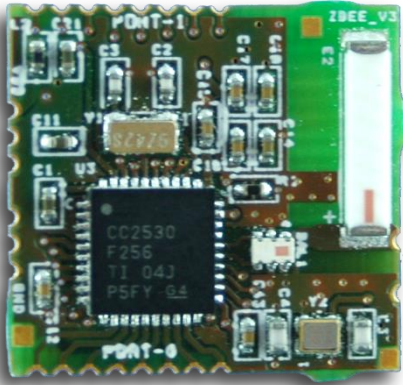
- Network visualization
- Projects management
- Authorization management network
- Objects configuration
- Network configuration (channel, PanId, keys, ...)
- Bindings, groupes, and scenes configuration,
- Software actions configuration (http, email, SMS,...),
- Alarms management,
- Backup of all network evenements
- Web Interface
- Available with CleoBee™ remote

Technical datas

Support	Delivered as package for Raspberry ou Preinstalled on a SD Card 8GB
Prerequisite	SD Card 8 GB

Hardware tools





ZBEE 5.0

Easy and wireless Home
Automation by CLEODE



OEM ZigBee® Module Functional description

The product Zbee is a model OEM RF Le produit ZBee est un module OEM RF in conformity with the IEEE 802.15.4. standard.

Designed to integrators of solutions, the module enables rapide development of hardware solutions (objects, controllers, ect...), without worrying about the implementation of the wireless and ZigBee® standard. With its small footprint, it can be integrated into any type of material (Box, sensor, actuator, ect...)

The module allows to integrate a ZigBee® stack complying with the standard ZigBee® pro 2007 and create complex mesh networks.

Low-energy, it is designed to operate on batteries (lithium, AAA, etc.)

Specifications

Key Features

- OEM module
- Operating frequency 2,4 GHZ
- IEEE 802.15.4 standard
- 14 Inouts/Outputs available
- Compliant with the Stack Pro 2007 "Home Automation" Public Profile and "Smart Energy" Profile

Conformity



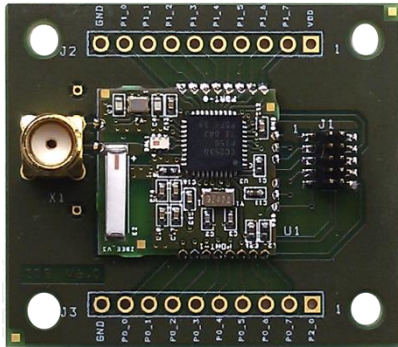
Meets European consumer safety, health and environmental requirements.



Meets the Home Automation Public Profile standard established by Zigbee alliance.

Technical Data

Weight	2 g
Power	2,4V à 3,6V
Consumption	< 2µA in idle mode
Input sensitivity	-98 dBm
Output power	+3,3 dBm
Range (outdoor)	100 m at 1 dBm 200 m at 3,3 dBm
Measurement	19/17,8/2,4 mm



ZDB 2.0

Easy and wireless Home
Automation by CLEODE



ZigBee® Evaluation Board Functional description

The ZigBee® evaluation board can rapidly implement applications using ZigBee® technology.

On a small area, the evolution board provides direct access to the connectors in the form of input/output module for programmable Zbee of CLEODE and a SMA antenna connector for adding an external antenna 2.4 GHz

The ZigBee evaluation board is intended primarily for users developer with knowledge of Linux, Unix, C language and electronics.

Specifications

Key Features

- CC2530 Texas Instruments
- Operating frequency 2,4 GHZ
- IEEE 802.15.4 standard
- 14 Inputs/Outputs available
- Programming port
- Extension SMA port for external antenna (not supplied)
- Compliant with the Stack Pro 2007 "Home Automation" Public Profile and "Smart Energy" Profile

Conformity



Meets European consumer safety, health and environmental requirements.



Meets the Home Automation Public Profile standard established by Zigbee alliance.

Technical Data

Weight	5 g
Power	3V
Consumption	< 2µA in idle
Input sensibility	-98 dBm
Output power	+3,3 dBm
Range (outdoor)	100 m at 1 dBm 200 m at 3,3 dBm



UBEE BOOST 1.0

Easy and wireless Home
Automation by CLEODE



ZigBee® USB Dongle Functional description

The Ubee Boost dongle is a network coordinator ZigBee® with an amplified signal up to +20 dBm. It is used to manage a wireless domestic network by Zigbee®.

Ubee Boost is the network coordinator and its firmware can be fully updated. Ubee Boost can be used under Windows, Linux, MacOS 10.5.

Used in conjunction with the network manager [CleoBee™](#), Ubee provide you the right solution to manage sensors and actuators on a Zigbee™ domestic network.

Specifications

Key Features

- ZigBee® coordinator with amplified signal
- Automatic Scan of using channels
- Network Parameters Storage
- Software pairing
- Fully programmable.
- Reprogrammable VID/PID.
- Compliant with the Stack Pro 2007 "Home Automation" Public Profile.

Conformity



Meets European consumer safety, health and environmental requirements.

Technical Data

Weight	20 g
Power	USB 2.0
Consumption	Compatible USB 2.0
Communication	Wireless 2,4 GHz compatible Stack pro 2007
Output Power	Up to +20 dBm



UBEE NANO 1.0

Easy and wireless Home
Automation by CLEODE



ZigBee® USB Dongle Functional description

The Ubee dongle is used to manage a wireless domestic network by Zigbee™.

Ubee is the network coordinator and its firmware can be fully updated.

Ubee can be used under Windows, Linux, MacOS 10.5.

Used in conjunction with the network manager [CleoBee™](#), Ubee provide you the right solution to manage sensors and actuators on a Zigbee™ domestic network.

Specifications

Key Features

- ZigBee® coordinator
- Automatic Scan of using channels
- Network Parameters Storage
- Software pairing
- Fully programmable.
- Reprogrammable VID/PID.
- Compliant with the Stack Pro 2007 "Home Automation" Public Profile.

Conformity



Meets European consumer safety, health and environmental requirements.

Technical Data

Weight	20 g
Power	USB 2.0
Consumption	Compatible USB 2.0
Communication	Wireless 2,4 GHz compatible Stack pro 2007



WIBEE 2.0

Easy and wireless Home
Automation by CLEODE



ZigBee® Platform Functional description

WiBee is a stand-alone controller capable of managing a ZigBee™ network from your PC using an EThernet or a WIFI interface and a Web Interface or CleoBee™ and a remote access CleoWeb from your phone, tablet, PC.

The WiBee product integrates embedded linux and is available natively via Ethernet and/or optional Wi-Fi and/or optional GSM/GPRS, 3G

It natively integrates a PHP server and a PostgreSQL database. Integrated to the WiBee system, a scenario manager allows for simple and easy configuration, management and program behavior such as:

- http command, Email on alert (intrusion, drop, ..)
- Automatic switching off lights
- Management opening depending on climatic parameters

Contenu et accessoires

WiBee	✓
Sector Adaptator 220/5 V	✓
CD User manual	✓

Specifications

Key Features

- Cortex-A9 Quad-core 1.5GHz
- RAM: 1GB DDR3
- Flash: 8GB eMMC
- Ethernet
- USB 2.0 port
- Options:
 - Wifi
 - GSM/GPRS ou 3G
- Ubuntu 14.04
- Compliant with the Stack Pro 2007 "Home Automation" Public Profile
- Measurement 77/104/30 mm
- Power 5 V continu

Conformity



Meets European consumer safety, health and environmental requirements.



Meets the Home Automation Public Profile standard established by Zigbee alliance.



3 700571 800012

BEEPACK™

Easy and wireless Home Automation by CLEODE



ZigBee® Evaluation Pack

Functional description

The BeePack product is a automation solution scalable, interactive and accessible to all.

It enables a fast implementation of ZigBee® objects without special knowledge.

Objects are discrete and do not require any wires. They all operate on batteries for at least 1 year. Only exception to this rule, the object type router that requires an outlet to allow you to expand your home automation solution throughout the house.

These smart objects can be moved at any time. They emit only the information that you have requested them and spend the rest of the time sleeping. They know interact with other ZigBee® network objects, depending on their needs and scenarios that are requested to them.

Delivered with a ZigBee® network manager, it provides you with a simple and complete solution for you, automation needs.

All products of CLEODE are natively interoperable and can enrich this basic package of functionality.

Pack description

CleoBee™	ZigBee® network manager
UBEE Nano	ZigBee® USB Nano
ZRC	ZigBee® remote control
ZPlug Boost	ZigBee® power outlet
ZGas	ZigBee® carbonyl monoxide and smoke detector

Conformity

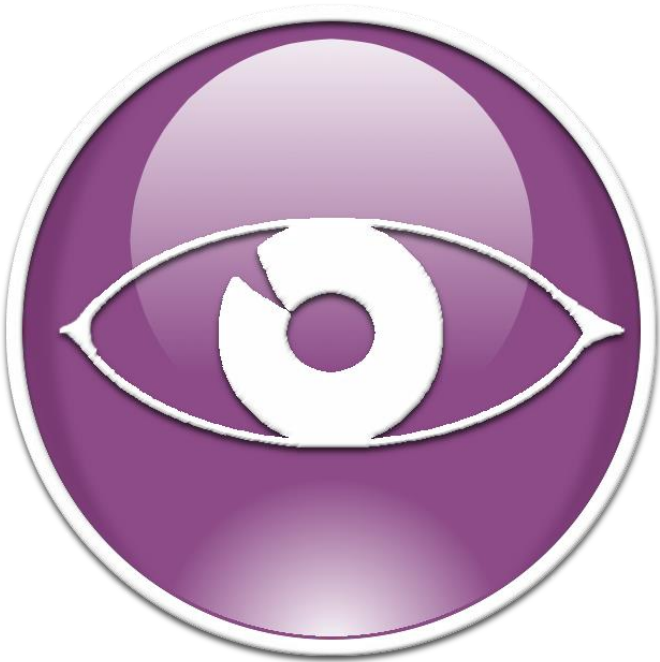


Meets European consumer safety, health and environmental requirements.



Meets the Home Automation Public Profile standard established by Zigbee alliance.

Various





ZXPAND 2.0

Easy and wireless Home
Automation by CLEODE



ZigBee® Router

Functional description

The ZXpand product can expand the network to cover your entire house.

On a small form factor, the ZXpand can become integrated directly into your wall. The box is designed for wall mounting, with screws or double sided adhesive.

The electrical connection is realized with a terminal block connector.

Specifications

Key Features

- ZigBee® router
- Manage up to 20 devices
- Range (outdoor) up to 100 m
- State LED
- Compatibilité stack pro 2007 profil "Home Automation"

Conformity



Meets European consumer safety, health and environmental requirements.



Meets the Home Automation Public Profile standard established by Zigbee alliance.

Technical Data

Weight	60g
Power	85-263 V 50-60 Hz
Measurement	53/52/32 mm

A complete offer for your projects

Customized solutions

Consultancy

CLEODE has unique expertise in the design and implementation of ZigBee® product.

With a partnership with Texas Instruments around its components ZigBee® and ZigBee Alliance member®, CLEODE optimizes, enriches and develops its products in accordance with standards.

CLEODE advises clients in the phases of engineering and design as industrialization or in systems installation.

Engineering

Leveraging our core products ZBee, Library ZCL, CLEODE designs and develops customer-specific management modules for both prototyping and industrialisation applications.

Areas of expertise:

- Electronics (diagram / routing / manufacturing file)
- Software (embedded / interface / HMI)
- Mechanical (CAD / Manufacturing / Packaging)

White label

CLEODE markets its products under its own brand or white label. On request it is possible to customize some products to best fit your business constraints.

CLEODE 3 Rue Thomas Edison

22300 LANNION – FR

Tel : +33 (0)2 96 48 68 18

Fax : +33 (0)2 96 48 19 11

www.cleode.fr

contact@cleode.fr

A complete offer for your projects

Customized solutions

Consultancy

CLEODE has unique expertise in the design and implementation of ZigBee® product.

With a partnership with Texas Instruments around its components ZigBee® and ZigBee Alliance member®, CLEODE optimizes, enriches and develops its products in accordance with standards.

CLEODE advises clients in the phases of engineering and design as industrialization or in systems installation.

Engineering

Leveraging our core products ZBee, Library ZCL, CLEODE designs and develops customer-specific management modules for both prototyping and industrialisation applications.

Areas of expertise:

- Electronics (diagram / routing / manufacturing file)
- Software (embedded / interface / HMI)
- Mechanical (CAD / Manufacturing / Packaging)

White label

CLEODE markets its products under its own brand or white label. On request it is possible to customize some products to best fit your business constraints.

CLEODE 3 Rue Thomas Edison

22300 LANNION – FR

Tel : +33 (0)2 96 48 68 18

Fax : +33 (0)2 96 48 19 11

www.cleode.fr

contact@cleode.fr